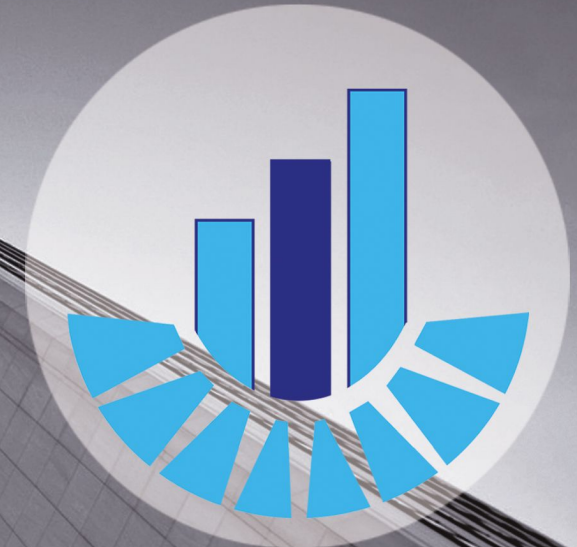




KEY FEATURES

- SUPPORTED TIME SYNCHRONIZATION PROTOCOLS: NTP - SNTP - PTP - IRIG-B
- ABILITY TO RESPOND UP TO 1000 REQUESTS PER SECOND
- SUPPORTING SNMP FOR MONITORING SYSTEM PARAMETERS
- WEB-BASED CMD OVER ETHERNET & WI-FI (CONFIGURATION & MONITORING DASHBOARD)
- SATELLITE MONITORING CAPABILITY
- COMBINED GPS - GLONASS - GALILEO - BEIDOU SATELLITE RECEIVER FOR SYNCING TIME
- REMOET FRAMEWORK UPGRADING
- USER-FRIENDLY CMD WITH EASY-TO-USE ENVIRONMENT
- ACCESSING CMD ON BROWSER WITH BOTH IP & DNS
- TWO INDEPENDENT RJ45 ETHERNET INTERFACE (10/100 MBPS)
- IEC 61850 COMPATIBLE FOR HIGH VOLTAGE SUBSTATIONS
- EMC / EMI COMPATIBLE (IEC61000-4-4 & IEC61000-4-5)
- TWO REDUNDANT POWER SUPPLY 100-230V AC/DC
- WORKING 8 HOURS ON INTERNAL BATTERY
- DEVICE TEMPERATURE MONITRING
- STANDARD 1U RACK MOUNT FRAME



TPS

Take the time in your hands...

CONTACT US:



+21 22793934



Unit 19, 5th Floor, No. 63, Rahmani St,
Manzarieh Junction, Ekhtiareh, Tehran, Iran



Tps.co.com

PNI - 400

PTP TIME SERVER

PNI-400

INDUSTRIAL RACK-MOUNT NTP/PTP TIME SERVER

The Industrial Rackmount Time Server is a reliable and high-performance solution for time synchronization in industrial environments. It supports multiple time synchronization protocols, including **NTP**, **SNTP**, **PTP**, and **IRIG-B**, and can respond to up to 1000 requests per second.

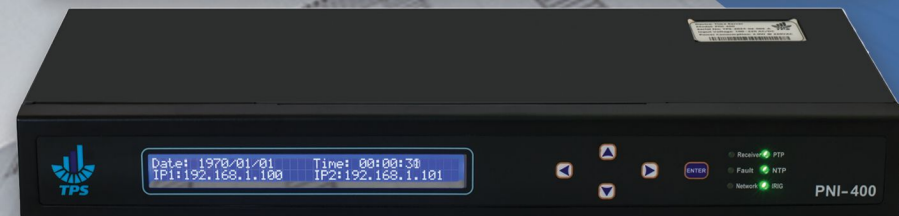
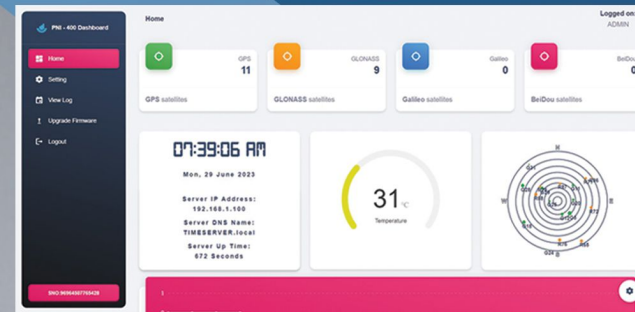
STANDARD 1U RACK MOUNT FRAME

The Industrial Rackmount Time Server is designed for easy deployment and management. It comes with a web-based **CMD** over Ethernet & **Wi-Fi**, allowing you to configure and monitor the device from anywhere in your network. The **CMD** is user-friendly and provides an easy-to-use environment for managing the device.

The device is also equipped with a satellite monitoring capability, with a combined **GPS - GLONASS - Galileo - BeiDou** satellite receiver for syncing time. This makes it an ideal solution for industrial applications that require precise time synchronization.

Moreover, the Industrial Rackmount Time Server is **IEC 61850** compatible, making it suitable for power high voltage substations. It has two independent **RJ45** ethernet interfaces, each with a speed of **10/100 Mbps**, and two redundant power supplies for added reliability.

The device has a standard **1U** rack mount frame, making it easy to mount in your existing rack. It also works for 8 hours on an internal battery and has a temperature control and monitoring feature to ensure optimal performance.



In conclusion, the Industrial Rackmount Time Server is a high-performance and reliable solution for time synchronization in industrial environments. It offers a range of key features, including support for multiple time synchronization protocols, SNMP monitoring, satellite monitoring capability, and more. With its user-friendly **CMD** and easy-to-deploy design, it's an ideal solution for industrial applications that require precise time synchronization.